



## **2011-2016 LML Y-Bridge & Crossover Pipe**

Covers installation of PN: WCF100165

(Before installation of parts please verify you have received all parts on your packing list)



1. Disconnect both batteries before proceeding with install.
2. Disconnect both sensors on air intake tube, loosen hose clamps and remove two phillips screws from airbox lid.



3. Remove intake tube along with airbox/lid.



4. Remove electrical connector and power cable at intake air heater, then disconnect connector at intake air valve.



5. Remove wheel well liner on passenger side of truck to gain access to airbox bracket/tray and remove them.



6. Disconnect temp sensor on top of passenger intercooler pipe and release retainer securing pipe to throttle valve and remove pipe from engine bay.

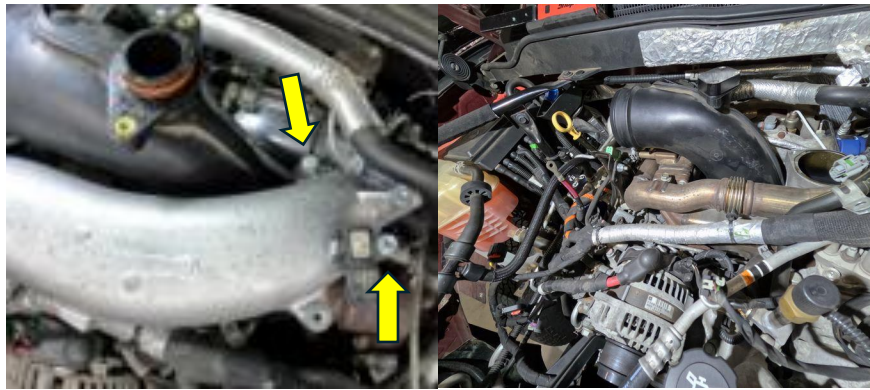




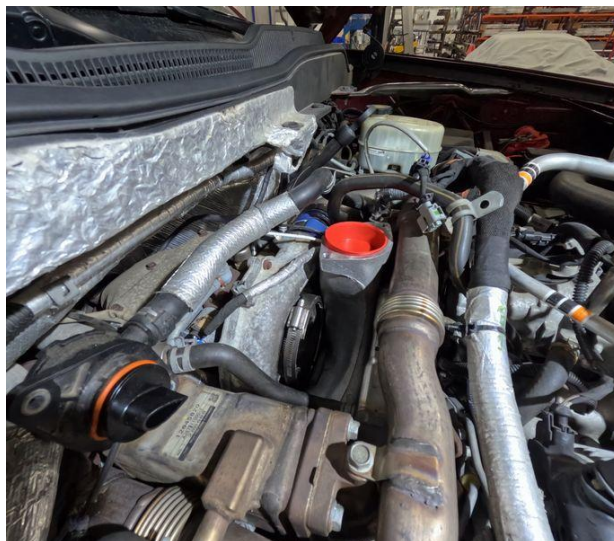
7. Remove support bracket from upper crossover pipe.



8. Remove two mounting bolts from upper crossover pipe at y-bridge connection and remove it from engine along with intake air valve and heater.



9. Remove PCV port from intake horn and then remove horn from engine after loosening clamp at turbo inlet.



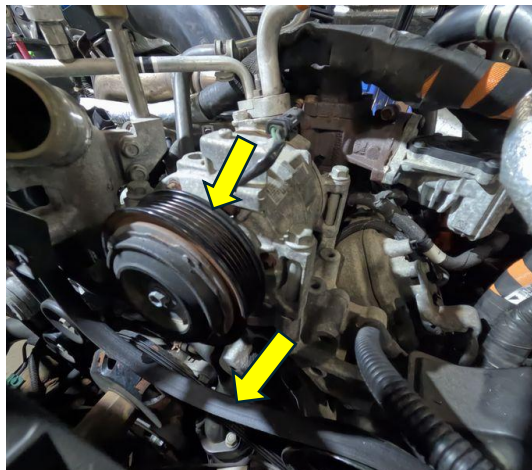
10. Drain coolant from cooling system on passenger side by popping out retaining clip and slowly working the hose off until coolant drains from it. Once drained, reattach hose and retaining clip.



11. Remove upper EGR cooler pipe.

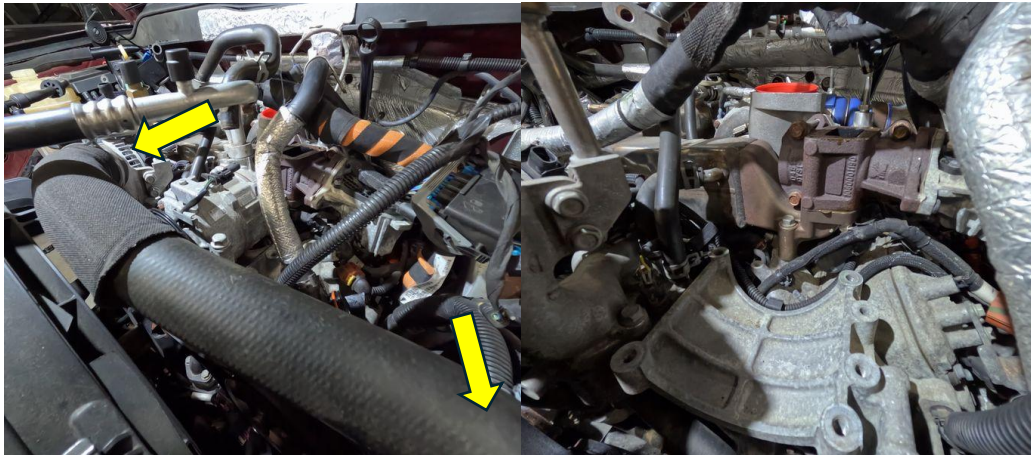


12. Remove serpentine belt.

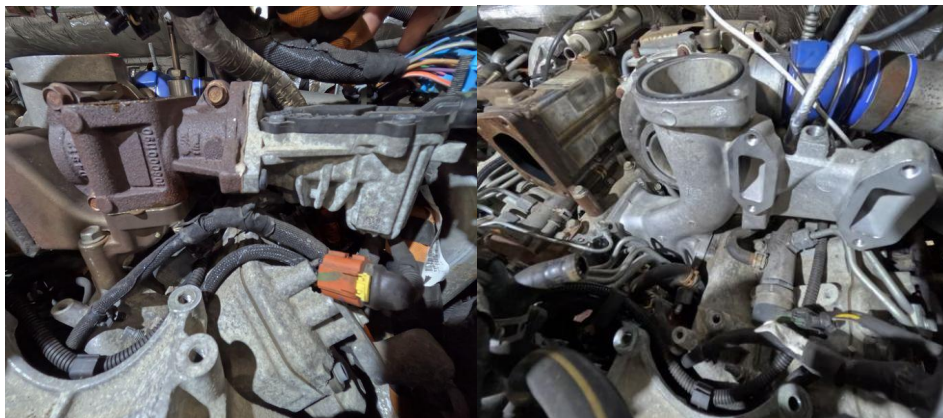




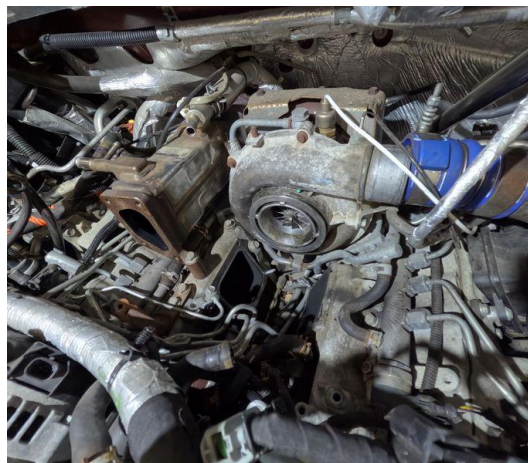
13. Remove upper radiator hose and A/C compressor to access EGR cooler hardware.



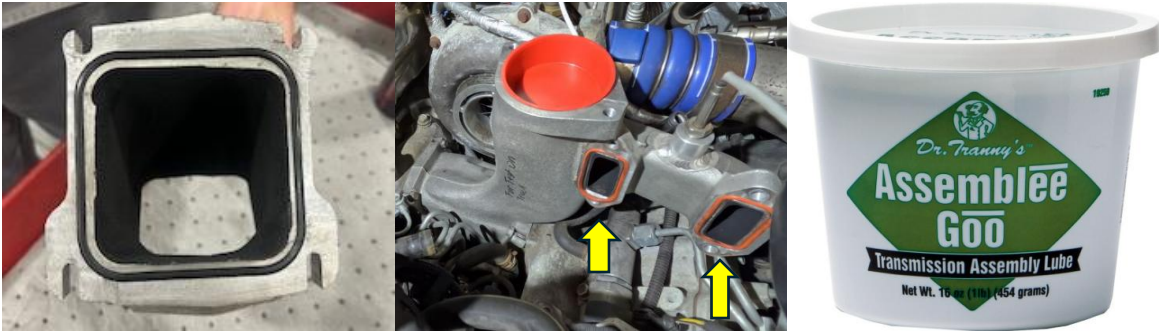
14. Remove front section of EGR cooler.



15. Remove Y-Bridge from engine valley. Turbo bolts at pedestal will need to be loosened to allow turbo to be rocked back towards firewall with a pry bar to give access to y-bridge bolts.



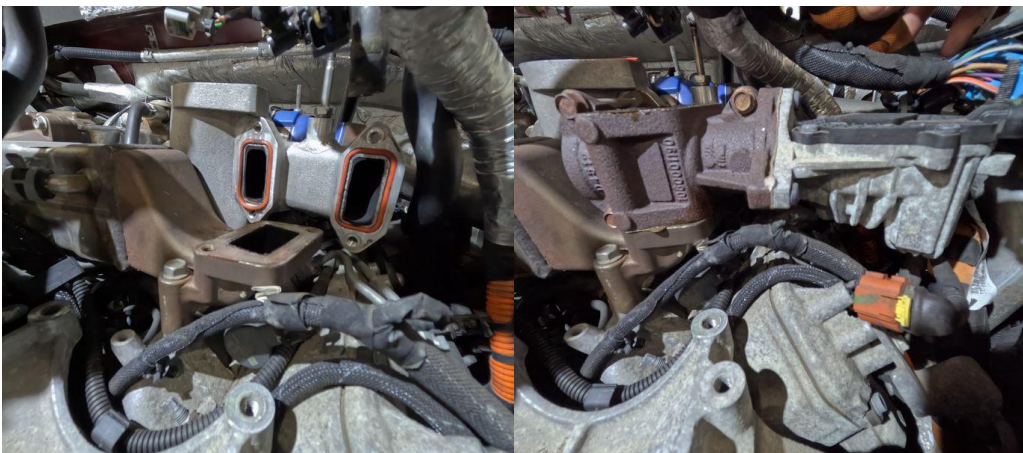
16. Carefully clean gasket surfaces on intake runners and EGR with razor blade, ensuring nothing falls into open intake runners.
17. Ensure supplied o-rings are fully seated in Y-Bridge intake runner flanges and EGR flanges and install in truck. Assembly lube like shown below can be used to help hold them in place. We also recommend using a cap/rag to block opening of y-bridge to avoid anything getting into engine.



18. Start by installing lower hardware to help pull bridge down into place, then finish by installing top bolts. This is a tight fit, so you'll want to use a pry bar again to rock turbo back towards firewall for more access. By slowly tightening the bottom hardware first, it will help line up top holes with the threads on the intake runners.

**Note: Using a 1/4" 10mm swivel socket will make it easier to reach the bolts.**

19. Once all Y-Bridge hardware is in place, they can be torqued to 89 in-lbs in a crisscross pattern.
20. Reinstall front half of EGR/EGR Cooler. We recommend using copper gasket spray on the steel gaskets before installation. Start with four bolts at gasket flange on bridge and leave everything loosely mounted for now.

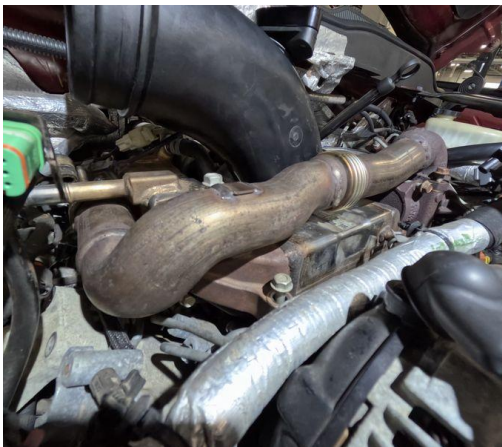




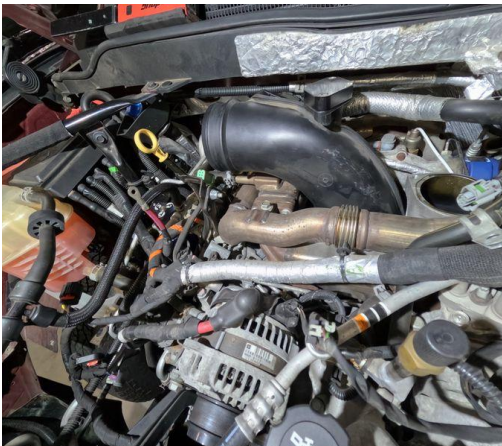
21. Reinstall intake horn and clamp while EGR cooler is still loose and maneuverable.



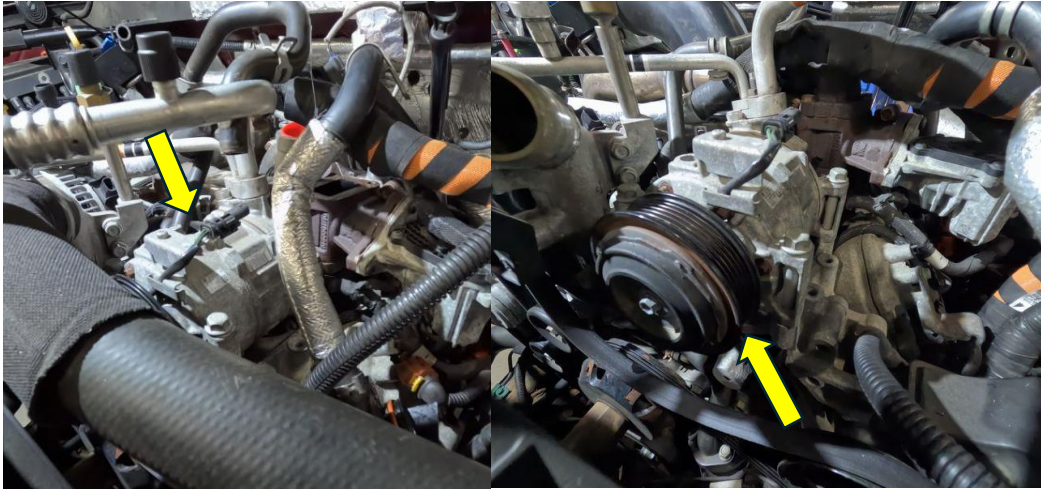
22. Reinstall EGR crossover pipe.



23. Begin tightening down all EGR bolts to 18ft-lbs, starting at passenger side and working towards driver side.



24. Reinstall AC compressor and serpentine belt.

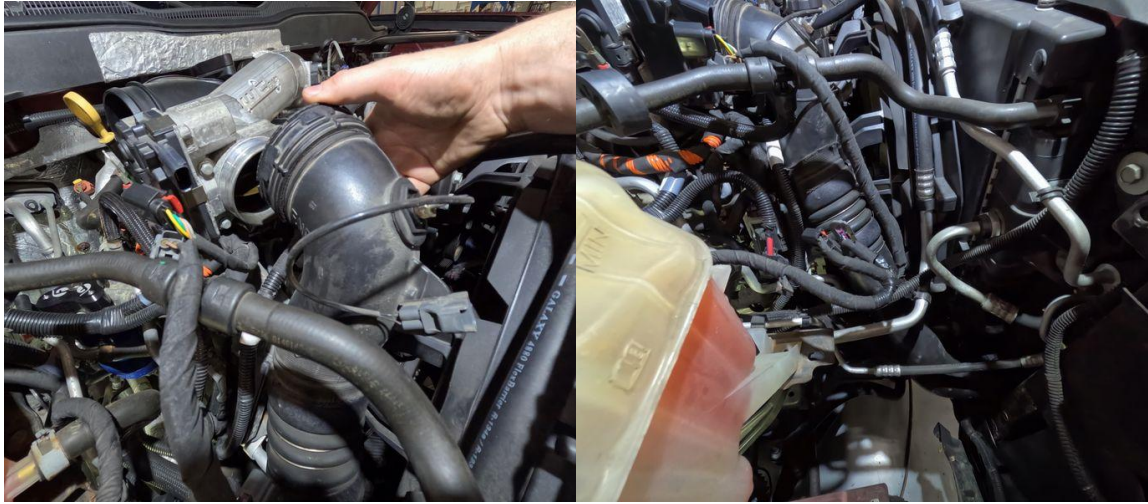


25. Install o-ring in crossover pipe flange then fasten throttle valve/heater (with new gasket in place) and MAP sensor on new crossover pipe and fasten it to Y-Bridge inlet flange. Engine side bolts are torqued to 18ft-lbs and intake air valve bolts are torqued to 89in-lbs.

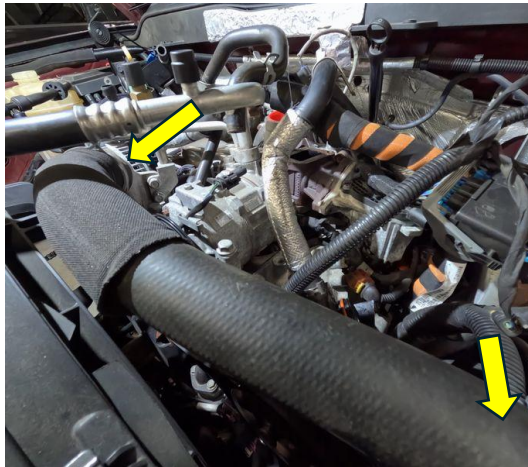




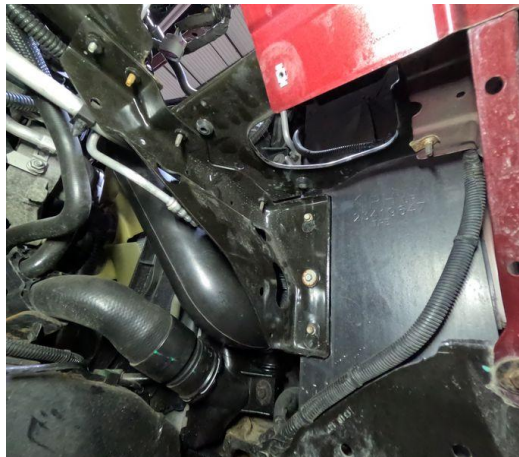
26. Reinstall passenger intercooler pipe between intercooler and throttle valve until you hear an audible “click”.



27. Reinstall upper coolant hose to thermostat housing and radiator.



28. Reinstall upper and lower airbox mounting brackets.



29. Reinstall airbox and intake tube.



30. Refill coolant tank between lower and upper limit lines.

31. Reconnect batteries and start truck, allowing it to idle ~15 minutes to purge air out of the coolant system and top off as needed to keep it between upper/lower limit lines. This is also a great time to complete a boost test to make sure no leaks are present after install. We offer one (shown below) on our website Part#:13U7H001.



32. Drive the truck, allowing it to go through a full heat cycle, then recheck the coolant level and top off if needed.

Any Questions, Comments, or Feedback?

Reach us by Email- [Sales@wcfab.com](mailto:Sales@wcfab.com)

Or the shop phone- 630-277-8239

Thank you for purchasing from Wehrli Custom Fabrication!